

# The **Value** Line

**GAMCO**

Commercial Restroom Accessories



Distributed by

[www.Ameraproducts.com](http://www.Ameraproducts.com)

Phone: (800) 608-6548

Fax: (409) 840-3543

[info@ameraproducts.com](mailto:info@ameraproducts.com)

# The Value Line



Gamco fulfills a specific niche in the commercial restroom accessories market when budget pricing is the primary consideration. Architects, distributors and developers have counted on Gamco for a comprehensive line of products designed and engineered for long-lasting durability and functionality. There is no better value.

## Large Project Focus

**ON TIME, ON BUDGET**

Gamco's manufacturing capabilities are designed for school, government, retail and other industrial projects. Customers can count on Gamco to meet their delivery requirements for even the largest projects.



## InStock

**3-DAY SHIPMENTS**

Choose from an extensive assortment of the most popular accessory models, and benefit with 3-day shipments within the U. S. from date of order. InStock models can be found at [gamcousa.com](http://gamcousa.com) and are identified with the "IS" symbol throughout this catalog.

## Gamco Customer Service

**POWERED BY BOBRICK AND IBOB**



Best-in-class Bobrick customer service is another reason the construction market relies on Gamco. Customers benefit with the iBob state-of-the-art order entry and tracking system that provides real time information throughout the production, manufacturing and fulfillment process.

## Customization

**AND SPECIAL FINISHES**

Height, width and depth dimensions can be customized for non-standard installations and special short-run quantities can be accommodated in most cases.



# Catalog symbols

## AND WHAT THEY MEAN



The wheelchair designates accessories that meet ADA Accessibility Guidelines. For a free copy of Bobrick's most up-to-date Planning Guide for Accessible Restrooms, visit bobrick.com.



Many of Gamco's products assist customers in fulfilling their sustainability and LEED objectives. For example, accessories are fabricated of 50%-70% recycled stainless steel. See Gamco's GTB-88 LEED information bulletin.



Products with the InStock symbol ship within three days of receipt of order.



# Table of Contents

- Combination Towel & Waste Units . . . . . 4
- Towel Dispensers & Waste Receptacles . . . . . 5
- Hand Dryers . . . . . 6
- Mirrors . . . . . 7
- Toilet Tissue Dispensers . . . . . 8
- Seat Cover Dispensers . . . . . 8
- Soap Dispensers. . . . . 9
- Grab Bars. . . . . 10-11
- Feminine Hygiene Accessories. . . . . 12
- Custodial Accessories . . . . . 12
- Healthcare Accessories . . . . . 13
- Restroom Accessories . . . . . 13
- Shower Accessories. . . . . 14
- Security Accessories . . . . . 15
- Specialty Accessories . . . . . 16-17

# Product Index

100 Series. . . . . 10	813NRC . . . . . 8	MSA-1 . . . . . 15
100CH. . . . . 14	814NRC . . . . . 8	MSA-5 . . . . . 15
100CHNR . . . . . 14	A-Series . . . . . 7	MSA-14 . . . . . 15
100CHSS . . . . . 14	BCS-1 . . . . . 13	MSA-18 . . . . . 15
100SC-42 x 72 . . . . . 14	BCS-2 . . . . . 13	MSA-25 . . . . . 15
100SC-72 x 72. . . . . 14	BP-1 . . . . . 13	ND-1. . . . . 12
125 Series. . . . . 10	CD-1 . . . . . 17	ND-5. . . . . 12
125 Swing-Up. . . . . 11	CG-2. . . . . 13	RGD-1 . . . . . 13
125 Swing-Up-PH. . . . . 11	C-Series . . . . . 7	S-5. . . . . 13
150 Series. . . . . 10	DR-5120. . . . . 6	SPB-1 . . . . . 13
23 . . . . . 8	DR-5128. . . . . 6	SPH-2 . . . . . 12
282 25. . . . . 12	DR-5750. . . . . 6	SRC100C . . . . . 14
352 25. . . . . 12	FT-Series . . . . . 7	TB-2 . . . . . 16
355 . . . . . 16	G-16AP . . . . . 9	TB-3 . . . . . 16
751 x 18. . . . . 16	G-58AP . . . . . 9	TD-11RPT . . . . . 5
751 x 24. . . . . 16	G-64LB . . . . . 9	TD-2 . . . . . 5
753 . . . . . 17	G-211 . . . . . 17	TD-5. . . . . 5
7636. . . . . 16	G-397 . . . . . 13	TD-11RPT . . . . . 5
7673 x 18 . . . . . 14	G-950FA. . . . . 9	TTD-5 . . . . . 8
7673 x 24 . . . . . 14	G-950SA . . . . . 9	TTD-11 . . . . . 8
76737 x 18 . . . . . 14	G-2116. . . . . 17	TTD-13 . . . . . 8
76737 x 24 . . . . . 14	G-5181 . . . . . 14	TSC-1 . . . . . 8
7674 x 18 . . . . . 16	G-5191 . . . . . 14	TW-1. . . . . 4
7674 x 24 . . . . . 16	G-8258 . . . . . 9	TW-1F . . . . . 4
76747 x 18 . . . . . 16	G-8248 . . . . . 9	TW-1FS . . . . . 4
76747 x 24 . . . . . 16	GB-5 Series . . . . . 11	TW-3. . . . . 4
7676 x 24 . . . . . 12	GB-10 Series . . . . . 11	TW-14RP . . . . . 4
76767 x 24 . . . . . 12	GB-12 Series . . . . . 11	TW-14RPFS . . . . . 4
76777 . . . . . 17	GB-45 Series . . . . . 11	TW-14RP-T . . . . . 4
76787 . . . . . 16	GB-50 Series . . . . . 11	US-5. . . . . 12
7679. . . . . 16	MC-1 . . . . . 13	WR-6 . . . . . 5
7680. . . . . 14	MC-2. . . . . 13	WR-11 . . . . . 5
76807 . . . . . 14	MS-1. . . . . 12	WR-14 . . . . . 5
7682. . . . . 17	MS-18 . . . . . 7	
76827 . . . . . 17	MS-24 . . . . . 7	

Distributed by  
[www.Ameraproducts.com](http://www.Ameraproducts.com)  
 Phone: (800) 608-6548  
 Fax: (409) 840-5541  
[info@ameraproducts.com](mailto:info@ameraproducts.com)

# Combination Towel & Waste Units

## TW-1 RECESSED COMBINATION TOWEL DISPENSER AND WASTE RECEPTACLE



Satin-finish stainless steel, one-piece 22-gauge (0.88mm) flange and removable waste receptacle, 18-gauge (1.2mm) door. Receptacle projects 5" (127mm).

TOWEL CAPACITY: 600 C-fold or 800 multifold

WASTE CAPACITY: 12-gal. (45.4-L)

OVERALL SIZE: 17 1/8" W, 56" H (435 x 1422mm)

**TW-1F** Semi-recessed 2" (51mm) skirt

**TW-1FS** Surface-mounted 4" (102mm) skirt

## TW-3 RECESSED COMBINATION MINI-TOWEL DISPENSER AND WASTE RECEPTACLE



Satin-finish stainless steel, one-piece 22-gauge (0.88mm) flange and removable waste receptacle.

TOWEL CAPACITY: 350 C-fold or 475 multifold

WASTE CAPACITY: 2-gal. (7.6-L)

OVERALL SIZE: 14" W, 28" H, 4" D (356 x 711 x 102mm)

## TW-14RP RECESSED COMBINATION ROLL TOWEL DISPENSER AND WASTE RECEPTACLE



Satin-finish stainless steel, one-piece 22-gauge (0.88mm) flange and removable waste receptacle, 18-gauge (1.2mm) door. Receptacle projects 5" (127mm). Towels are dispensed when lower bar is pushed.

TOWEL CAPACITY: Roll 7 3/4" (197mm) wide up to 8" (203mm) dia.

WASTE CAPACITY: 12-gal. (45.4-L)

OVERALL SIZE: 17 1/8" W, 56" H (435 x 1422mm)

**TW-14RPFS** Surface-mounted 4" (102mm) skirt

## TW-14RP-T COMBINATION AUTOMATIC ROLL TOWEL DISPENSER AND WASTE RECEPTACLE



Satin-finish stainless steel, one-piece 22-gauge (0.88mm) flange and removable waste receptacle, 18-gauge (1.2mm) door. Receptacle projects 5" (127mm).

TOWEL CAPACITY: Accepts paper rolls 7 3/4" (197mm) wide up to 8" (203mm) dia. 1 1/2" to 2" (38 to 51mm) core

WASTE CAPACITY: 12-gal. (45.4-L)

OVERALL SIZE: 17 1/8" W, 56" H (435 x 1472mm)







# Towel Dispensers & Waste Receptacles

**TD-2**  
SURFACE-MOUNTED  
TOWEL  
DISPENSER



**TD-5**  
SURFACE-MOUNTED  
SINGLE FOLD  
TOWEL DISPENSER



**TD-11RPT**  
SURFACE-MOUNTED  
AUTOMATIC  
TOUCHLESS  
ROLL PAPER  
TOWEL  
DISPENSER



Satin-finish stainless steel, 22-gauge (0.8mm). Cabinet slots on sides indicate paper towel supply.

TOWEL CAPACITY: 400 C-fold or 525 multifold

OVERALL SIZE: 10 13/16" W, 14 1/16" H, 3 15/16" D (275 x 355 x 100mm)



Satin-finish stainless steel, 22-gauge (0.8mm). Cabinet slots on sides indicate paper towel supply.

TOWEL CAPACITY: 400 singlefold

OVERALL SIZE: 11 1/2" W, 7 1/2" H, 6" D (292 x 191 x 152mm)

Satin-finish stainless steel. Towels are dispensed automatically when hands are placed below dispenser. Individually adjustable modes for paper saving, time delay and sheet length.

TOWEL CAPACITY: Universal roll paper, 7-3/4" to 8" (197 to 203mm) wide and up to 8" (203mm) in diameter. 1-1/2" to 2" (38 to 51mm) core.

OVERALL SIZE: 13" W, 16 7/8" H, 8 7/8" D (330 x 429 x 225mm)

**WR-6**  
RECESSED  
WASTE  
RECEPTACLE



**WR-11**  
FLOOR  
STANDING  
SWING-TOP  
WASTE  
RECEPTACLE



**WR-14**  
SURFACE-MOUNTED  
WASTE  
RECEPTACLE



Satin-finish stainless steel, one-piece 22-gauge (0.8mm) flange and removable waste receptacle. Receptacle projects 5" (127mm).

CAPACITY: 12-gal. (45.4-L)

OVERALL SIZE: 17 1/8" W, 30 5/8" H x 8 3/4" D (435 x 778 x 222mm)



Satin-finish stainless steel 20-gauge (0.89mm) receptacle. Self-closing doors. Rubber feet provided.

CAPACITY: 13-gal. (49.2-L)

OVERALL SIZE: 12 1/2" W, 29 1/2" H, 12 1/2" D (318 x 749 x 318mm)



Satin-finish stainless steel 22-gauge (0.8mm) receptacle. Hemmed top and bottom edges for safety.

CAPACITY: 12-gal. (45.4 L)

OVERALL SIZE: 15 1/4" W, 23" H, 8" D (387 x 584 x 203mm)





## NEW DR-5125 115V

SURFACE-MOUNTED  
ADA COMPLIANT  
HIGH SPEED  
HAND DRYER  
WITH HEPA FILTER



Satin stainless steel cover with HEPA filter. No-touch operation. UL, CE, EMC, LVD, CB, WEEE, ROHS certified.

VOLTAGE: 110-120V, 7.6-8.4Amp, 50/60 HZ

OVERALL SIZE: 11 7/16" W, 10 11/16" H, 3 15/16" D  
(290 x 271 x 100mm)

## NEW DR-5125.MBLK 115V

SURFACE-MOUNTED  
ADA COMPLIANT  
HIGH SPEED  
HAND DRYER  
WITH HEPA FILTER,  
MATTE BLACK



Matte black cover with HEPA filter. No-touch operation. UL, CE, EMC, LVD, CB, WEEE, ROHS certified.

VOLTAGE: 110-120V, 7.6-8.4Amp, 50/60 HZ

OVERALL SIZE: 11 7/16" W, 10 11/16" H, 3 15/16" D  
(290 x 271 x 100mm)

## DR-5128 SURFACE-MOUNTED ADA COMPLIANT HAND DRYER



Brushed stainless steel cover with SteriTouch® antimicrobial additive. No-touch operation. cETLus approved.

UNIVERSAL VOLTAGE: 110-120/208/220-240 VAC input

OVERALL SIZE: 11 7/16" W, 10 11/16" H, 3 15/16" D  
(290 x 271 x 100mm)

DR-5120 White epoxy painted cover 

## DR-5750 115V RECESSED CAST IRON HAND DRYER



1/4" thick cast iron with porcelain enamel finish. Universal motor type, 1/10 hp at 7500 rpm. cULus listed.

VOLTAGE: 115V AC, 9.6 Amp, 60 Hz

OVERALL SIZE: 13 1/8" W, 13 7/8" H, 7 1/2" D (333 x 353 x 189mm)

SteriTouch is a registered trademark of SteriTouch Ltd.

## A-SERIES WELDED-FRAME



Satin-finish stainless steel. Corners welded, ground and polished smooth.

STANDARD SIZES/MODEL NUMBERS: A-18 x 24, **IS** A-18 x 30, **IS** A-18 x 36, A-18 x 60, A-24 x 30, A-24 x 36, A-24 x 48, A-24 x 60, A-24 x 72, A-36 x 36, A-48 x 30, A-48 x 36, A-60 x 36, A-72 x 36

Max. one-piece mirror is 96" x 48" any direction, custom sizes available

OPTIONS:

- T** For tempered glass
- L** For laminated glass
- SS** For polished stainless steel;

MS-18 & MS-24 Mirror Shelf available for A, C, FT-Series

## C-SERIES CHANNEL-FRAME



Bright-polished stainless steel finish. Mitered corners

STANDARD SIZES/MODEL NUMBERS: C-18 x 24, **IS** C-18 x 30, **IS** C-18 x 36, C-20 x 60, C-24 x 30, **IS** C-24 x 36, C-24 x 48, C-24 x 60, C-30 x 36, C-36 x 36, C-36 x 48, C-48 x 36, C-60 x 36, C-72 x 36

Max. one-piece mirror is 96" x 48" any direction, custom sizes available

OPTIONS:

- T** For tempered glass
- L** For laminated glass
- SS** For polished stainless steel;

MS-18 & MS-24 Mirror Shelf available for A, C, FT-Series

## MS-18 MIRROR SHELF



Satin-finish stainless steel. Mirror shelf is 18" L, 1 1/4" H (457 x 32mm), ADA-compliant, protrudes 4" (100mm) from wall.

**MS-24** **IS** 24" L, 1 1/4" H (610 x 32mm)

Special-order sizes: up to 60" (1525mm) are available on request.

## FT-SERIES FIXED-TILT POSITION



Satin-finish stainless steel frame. Corners welded, ground and polished smooth.

STANDARD SIZES/MODEL NUMBERS: **IS** FT-18 x 30, **IS** FT-18 x 36, FT-24 x 36

OPTIONS:

- T** For tempered glass
- L** For laminated glass
- SS** For polished stainless steel

MS-18 & MS-24 Mirror Shelf available for A, C, FT-Series





## TTD-5

**SURFACE-MOUNTED MULTI-ROLL TOILET TISSUE DISPENSER**



Satin-finish stainless steel. Extra toilet tissue roll automatically drops in place after bottom roll is depleted.

**CAPACITY:** Two rolls up to 5 1/4" (135mm) dia.

**OVERALL SIZE:** 6 1/16" W, 11" H, 5 15/16" D (154 x 279 x 151mm)

## TTD-11

**SURFACE-MOUNTED JUMBO-ROLL TOILET TISSUE DISPENSER**



Satin-finish stainless steel, 20-gauge (0.89mm). Sliding panel exposes one roll at a time and allows for easy roll changeover.

**CAPACITY:** Two rolls up to 9" (289mm)

**OVERALL SIZE:** 19 3/16" W, 10 3/8" H, 5 1/4" D (487 x 264 x 133mm)

## TTD-13

**SURFACE-MOUNTED JUMBO TOILET TISSUE DISPENSER**



Satin-finish stainless steel. 22-gauge (0.8mm). Slot on front reveals tissue supply.

**CAPACITY:** One roll up to 9 3/8" (238mm) dia. 4" (102mm) wide

**OVERALL SIZE:** 10 1/2" W, 4 1/2" D (267 x 114mm)

## 23

**TOILET TISSUE HOLDER**



Bright-polished chrome-plated steel. Theft-resistant locking device.

**CAPACITY:** Two rolls up to 5" (127mm) dia.

**OVERALL SIZE:** 12 3/8" W, 12 3/4" H, 4 1/4" D (314 x 70 x 108mm)

## 814NRC

**DOUBLE-ROLL TOILET TISSUE HOLDER WITH NO ROLL CONTROL**



Die cast aluminum. Theft-resistant locking device. Spindle fabricated of grey polystyrene.

**CAPACITY:** Two rolls up to 5 1/4" (133mm) dia.

**OVERALL SIZE:** 13 1/8" W, 1 3/4" H, 4 1/4" D (333 x 44 x 108mm)

**813NRC** Surface-mounted single-roll toilet tissue holder with no roll control

## TSC-1

**SURFACE-MOUNTED TOILET SEAT-COVER DISPENSER**



Satin-finish stainless steel, 22-gauge (0.8mm). Fills from the bottom through concealed opening.

**CAPACITY:** Dispenses 250 single- or half-fold covers

**OVERALL SIZE:** 15 3/4" W, 11" H, 2" D (400 x 279 x 51mm)





## NEW G-8258

COUNTER-MOUNTED  
AUTOMATIC,  
TOP-FILL LIQUID  
SOAP DISPENSER



Bright polished 304 stainless steel spout equipped with touchless IR sensor and low soap level LED light indicator. Locked fill port cap opens with a special funnel key that is used for top filling the dispenser. Polypropylene reservoir tank installs below counter.  
CAPACITY: 50.7-fl. oz. (1.5-L)

## NEW G-8248

COUNTER-MOUNTED  
AUTOMATIC,  
TOP-FILL FOAM  
SOAP DISPENSER



Bright polished 304 stainless steel spout equipped with touchless IR sensor and low soap level LED light indicator. Locked fill port cap opens with a special funnel key that is used for top filling the dispenser. Polypropylene reservoir tank installs below counter.  
CAPACITY: 50.7-fl. oz. (1.5-L)

## G-950SA

SURFACE-MOUNTED  
AUTOMATIC  
LIQUID SOAP  
DISPENSER



Satin-finish stainless steel. Dispenses a variety of liquid soaps and liquid or gel hand sanitizers. Lockable housing is equipped with clear acrylic refill-indicator window and hinged for refilling and maintenance. CE certified.

CAPACITY: 30-fl. oz. (850 ml)

OVERALL SIZE: 4 3/16" W, 10 17/32" H, 4 7/32" D (106 x 268 x 107mm)

## G-950FA

SURFACE-MOUNTED  
AUTOMATIC  
FOAM SOAP  
DISPENSER



Satin-finish stainless steel. Dispenses a variety of foaming soaps and foam hand sanitizers. Lockable housing is equipped with clear acrylic refill-indicator window and hinged for refilling and maintenance. CE certified.

CAPACITY: 27-fl. oz. (800 ml)

OVERALL SIZE: 4 1/4" W, 10 17/32" H, 4 7/32" D (108 x 268 x 107mm)

## G-16AP

SURFACE-MOUNTED  
LIQUID SOAP  
DISPENSER



Satin-finish stainless steel. Tank-type soap dispenser with all-purpose valve. Soap level indicator window. Hinged filler-top requires special key to open.

CAPACITY: 40-fl. oz. (1.2-L)

OVERALL SIZE: 4 3/4" W, 8 1/4" H, 3" D (120 x 210 x 76mm)

## G-58AP

SURFACE-MOUNTED HORIZONTAL  
LIQUID SOAP DISPENSER



Satin-finish stainless steel. Tank-type soap dispenser with all-purpose valve. Soap level indicator window. Hinged filler-top requires special key to open.

CAPACITY: 40-fl. oz. (1.2-L)

OVERALL SIZE: 8 1/4" W, 4 3/4" H, 3" D (210 x 121 x 76mm)

## G-64LB

COUNTER-MOUNTED  
LIQUID SOAP DISPENSER



Chrome-plated brass. 4" (102mm) spout. Polyethylene soap container with easy viewing of soap level. Top fill for convenience.

CAPACITY: 32-fl. oz. (0.9-L)



# Grab Bars



## EXPOSED FLANGE



- Stainless steel, 3" (76mm) dia. with 3 countersunk mounting holes.
- Available for 1 1/4" and 1 1/2" diameter bars.
- To specify: Series, E (Exposed) x grab bar length, e.g., 125E x 36

## CONCEALED FLANGE



- 1/2" (13mm) deep, stainless steel, 3" (76mm) dia. furnished with 3 stainless steel set screws and one back plate.
- Available for 1 1/2" diameter bars.
- To specify: Series, C (Concealed) x grab bar length, e.g., 150C x 36

## SNAP FLANGE



- Mounting plate is stainless steel, 3" (76mm) dia. Snap flange cover is stainless steel.
- Available for 1", 1 1/4" and 1 1/2" diameter bars.
- To specify: Series, S (Snap) x grab bar length, e.g., 150S x 36

## 100 SERIES STRAIGHT GRAB BAR



Satin-finish stainless steel tubing.

BAR DIA.: 1" (25mm)

STANDARD LENGTHS: 18", 24", (455, 610mm)

FLANGE STYLES: Snap

## 125 SERIES STRAIGHT GRAB BAR



Type 304 stainless steel tubing. Custom sizes available.

BAR DIA.: 1 1/4" (32mm)

STANDARD LENGTHS IN SATIN-FINISH: 12", 18", 24", 30", 36", 42", 48" (305, 455, 610, 760, 915, 1060, 1220mm).

STANDARD LENGTHS IN BRIGHT-POLISHED: 18", 24", 36", 42" (455, 610, 915, 1060mm)

SUFFLIX DESCRIPTION:

- B Bright-polished finish
- T Non-slip safety-texture grip
- E Exposed flange
- S **IS** Snap flange

## 150 SERIES STRAIGHT GRAB BAR



Satin-finish stainless steel tubing. Custom sizes available.

BAR DIA.: 1 1/2" (38mm)

STANDARD LENGTHS: 12", **IS** 18", **IS** 24", 30" **IS** 36", **IS** 42", 48" (305, 455, 610, 760, 915, 1060, 1220mm)

SUFFLIX DESCRIPTION:

- T Non-slip safety-texture grip
- C Concealed flange
- E Exposed flange
- S **IS** Snap flange

## -5 SERIES

90 DEGREE ANGLE  
LEFT or RIGHT



Standard dimensions: 16" W x 32" D (406 x 813mm), left or right configuration. Satin-finish stainless steel tubing. Custom sizes available.

BAR DIA.:

**150 SERIES** 1 1/2" (38mm)

MODEL NUMBERS: 150S-5L, 150S-5R

SUFFLIX DESCRIPTION:

-T Non-slip safety-texture grip

## -10 SERIES

HORIZONTAL TUB GRAB BAR



Standard dimensions: 20" W x 40" D (508 x 1016mm). Satin-finish stainless steel tubing. Custom sizes available.

BAR DIA.:

**125 SERIES** 1 1/4" (32mm)

**150 SERIES** 1 1/2" (38mm)

MODEL NUMBERS: 125S-10, 150S-10

SUFFLIX DESCRIPTION:

-T Non-slip safety-texture grip

## -12 SERIES

HORIZONTAL TUB OR SHOWER



Standard dimensions: 15 7/8" W, 30 7/8" D (403 x 784mm). Satin-finish stainless steel tubing. Custom sizes available.

BAR DIA.:

**125 SERIES** 1 1/4" (32mm)

**150 SERIES** 1 1/2" (38mm)

MODEL NUMBERS: 125S-12, 125S-12T, 150S-12, 150S-12T

SUFFLIX DESCRIPTION:

-T Non-slip safety-texture grip

## -45 SERIES

HORIZONTAL SHOWER  
GRAB BAR



Standard dimensions: 30" W x 30" D (762 x 762mm). Satin-finish stainless steel tubing. Custom sizes available.

BAR DIA.:

**150 SERIES** 1 1/2" (38mm)

SUFFLIX DESCRIPTION:

-T Non-slip safety-texture grip

## -50 SERIES

TWO WAY  
WHEELCHAIR BAR



Standard dimensions: 50" W x 36" D (1270 x 914mm). Satin-finish stainless steel tubing. Custom sizes available.

BAR DIA.:

**125 SERIES** 1 1/4" (32mm)

**150 SERIES** 1 1/2" (38mm)

MODEL NUMBERS: 125S-50, 150S-50

SUFFLIX DESCRIPTION:

-T Non-slip safety-texture grip

## 125

SWING-UP



Satin-finish stainless steel tubing.

OVERALL LENGTH: 29 15/16" D, 11 13/16" H (760 x 300mm)

BAR DIA.: 1 1/4" (32mm)

## 125

SWING-UP-PH



Satin-finish stainless steel tubing. With toilet tissue holder.

OVERALL LENGTH: 29 15/16" D, 11 13/16" H (760 x 300mm)

BAR DIA.: 1 1/4" (32mm)



# Feminine Hygiene Accessories



**282 25**

**SURFACE-MOUNTED NAPKIN-TAMPON VENDOR**



Satin-finish stainless steel. Single-coin mechanism for 25¢ operation. 18-gauge (1.2mm) door. Separate lock and key for coin box.

CAPACITY: 30 Napkins, 27 Tampons

OVERALL SIZE: 11 7/8" W, 25 7/8" H, 6 1/2" D (300 x 655 x 165mm)

**352 25** Recessed 13 7/8" W, 27 7/8" H, 4" to 6 1/2" D (350 x 710 x 100 to 165mm)

**ND-1**

**SURFACE-MOUNTED SANITARY NAPKIN DISPOSAL**



Satin-finish stainless steel, 22-gauge (0.8mm).

CAPACITY: 1.0-gal. (3.8 L)

OVERALL SIZE: 7 1/2" W, 10" H, 3 13/16" D (191 x 254 x 97mm)

**ND-5**

**SURFACE-MOUNTED COVERALL SANITARY NAPKIN DISPOSAL**



Satin-finish stainless steel. Door has tumbler lock. Door has tumbler lock. Self-closing panel covers disposal opening. Removable, leak-proof, plastic receptacle.

CAPACITY: 1.2-gal. (4.6-L)

OVERALL SIZE: 10 11/16" W, 15 1/8" H, 4 1/16" D (270 x 385 x 105mm).

# Custodial Accessories & Hooks

**US-5**

**UTILITY SHELF**



Satin-finish stainless steel, 18-gauge (1.2mm). Spring-loaded rubber cam holders. Shelf above handle area provides clear access to stored materials.

OVERALL SIZE: 34" L, 8" D (864 x 203mm), 3 Holders, 4 Hooks

**MS-1**

**MOP STRIP**



Mop holder with spring-loaded rubber cam holders. 24" (610mm) Mop Strip with 3 Holders

PROJECTS: 4 9/16" (116mm) from wall

**7676 X 24**

**TOWEL BAR SHELF**



Bright-polished stainless steel square tubes 3/8" (9.5mm) . 1/4" (6mm) square towel bar below shelf.

PROJECTS: 8 1/4" (210mm) from wall

**76767 X 24** Similar to 7676 x 24 with satin-finish

**SPH-2**

**SHELF WITH TOILET TISSUE DISPENSER**



Satin-finish stainless steel. 1/2" (13mm) return edges for maximum rigidity.

CAPACITY: Two rolls up to 5 1/2" (140mm) dia.

OVERALL SIZE: 16" W, 4" H, 5" min. D (406 x 110 x 127mm)



**SPB-1**  
SPECIMEN  
PASS-THRU  
CABINET



Satin-finish stainless steel. Self-closing doors provided with a pull knob. Removable tray provided.

OVERALL SIZE: 13 1/2" W, 12 7/8" H, 6" W (343 x 327 x 152mm)

Wall Thickness: 1 3/4" to 5 1/2" (10 to 140mm)

**BP-1**  
SURFACE-  
MOUNTED  
BED PAN  
RACK



Satin-finish stainless steel, 18-gauge (1.2mm).

OVERALL SIZE: 11" W, 24" H (279 x 610mm)

PROJECTS: 4 5/8" (117mm) from wall

**MC-1**  
RECESSED  
MEDICINE  
CABINET



Recessed cabinet. Door has magnetic door catch and stainless steel door stop. Cabinet inverted for right- or left-hand door swing.

OVERALL SIZE: 16 3/8" W, 26 3/8" H, 4 5/16" D (416 x 660 x 109mm)

**MC-2** Surface-mounted 4" (102mm) skirt

**G-397**  
RECESSED  
MEDICINE  
CABINET



Recessed cabinet. Door has stainless steel channel frame and a magnetic catch. Cabinet inverted for right- or left-hand door swing.

OVERALL SIZE: 16 3/8" W, 26 3/8" H, 3 1/2" D (416 x 660 x 89mm)

**CG-2**  
SERIES  
CORNER  
GUARD



Satin-finish stainless steel, 18-gauge (1.2mm). Units have 90° angle with 1/8" (3mm) radius. Custom sizes and styles available.

OVERALL SIZE: 1 1/2" W, 48" H, 1 1/2" D (29 x 1219 x 38mm)

**RGD-1**  
RUBBER  
GLOVE  
DISPENSER



Satin-finish stainless steel, 22-gauge (0.8mm) flange.

CAPACITY: Any standard size box of rubber gloves

OVERALL SIZE: 14" W, 9 3/4" H, 4" D (356 x 248 x 102mm)

Restroom Accessories



**BCS-1**  
SURFACE-MOUNTED  
BABY CHANGING  
STATION



Cream-color polypropylene cabinet and bed. Reinforced full-length steel-on-steel hinge mechanism.

OVERALL SIZE: Closed - 35 1/4" W, 20" H, 4" D (895 x 508 x 100mm)

Extension open - 19" (483mm)

**BCS-2** Similar to BCS-1 in Grey

**S-5 SERIES**  
STAINLESS STEEL SHELF



Satin-finish stainless steel, 18-gauge (1.2mm). Brackets - 18-gauge (1.2mm) welded to shelf.

OVERALL SIZE: 16" L, 5" W, 4" H (406 x 127 x 110mm)



# Shower Accessories



## G-5181

FOLDING SOLID PHENOLIC  
REVERSIBLE SHOWER SEAT



Seat is constructed of durable, water-resistant, ivory-colored 1/2" (13mm) thick solid phenolic. Reversible for left- or right-hand field installation.

OVERALL SIZE: Ht.: 17-19" (432-483mm) from top of seat to floor

SEAT: 33" W (840mm)

PROJECTS: 22 5/16" (565mm) from wall

## G-5191

FOLDING SOLID PHENOLIC  
SHOWER SEAT



Seat is constructed of durable, water-resistant, ivory-colored 5/16" (8mm) thick solid phenolic. Compact design.

OVERALL SIZE: Ht.: 17-19" (432-483mm) from top of seat to floor

SEAT: 18" W (455mm)

PROJECTS: 15 13/16" (400mm) from wall

## 100 SERIES SHOWER CURTAINS



Opaque, matte white vinyl; Contains Sure-Check® Linen Antimicrobial Fabric Protection. Meets federal specifications.

**100SC-42 x 72** Curtain 42" W, 72" H (1065 x 1830mm), requires 8 hooks

**100SC-72 x 72** Curtain 72" W, 72" H (1830 x 1830mm), requires 13 hooks

Sure-Check is a Registered Trademark of PAR Technology Corporation.

## SR100C

CONCEALED MOUNTING  
SHOWER CURTAIN ROD



Curtain rod constructed of 18-gauge (1.2mm), satin-finish stainless steel. One-piece concealed flange constructed of 20-gauge (.90mm) stainless steel.

BAR DIA.: 1" (25mm), 1 1/4" (32mm)

STANDARD LENGTHS: 48", 60", 72" (1219, 1524, 1829mm)

## 100 SERIES

SHOWER  
CURTAIN  
HOOKS



For use on 1" and 1 1/4" (25 and 32mm) dia. shower curtain rods.

OVERALL SIZES:

**100CH** Chrome-plated steel. Hook is 2 13/16" H x 1 15/32" W (71 x 37mm)

**100CHNR** Chrome-plated steel with nylon rollers 3 13/32" H, 1 7/8" W (87 x 48mm)

**100CHSS** Stainless Steel Hook is 2 5/8" H x 1 5/8" W (67 x 41mm)

## 7673

TOWEL BARS



Bright-polished 22-gauge (0.8mm) stainless steel square tubing.

PROJECTS: 3 1/4" (79mm) from wall

OVERALL SIZES:

**7673 X 18** 18" (457mm) bar length

**7673 X 24** 24" (610mm) bar length

**76737 X 18** Satin finish, 18" (457mm) bar length

**76737 X 24** Satin-finish, 24" (610mm) bar length

## 7680

SOAP DISH



Bright-polished stainless steel. Surface-mounted soap dish has two drain holes and two soap-support ridges.

OVERALL SIZE: 4 1/4" (108mm) PROJECTS: 4 1/8" (105mm) from wall

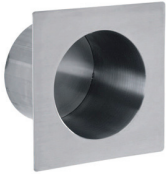
OPTION:

**76807** Satin-finish stainless steel



## MSA-1

RECESSED  
MAXIMUM  
SECURITY  
TOILET PAPER  
HOLDER



Satin-finish stainless steel, 14-gauge (1.9mm).  
CAPACITY: One standard toilet tissue roll  
OVERALL SIZE: 7 1/16" W, 7 1/16" H, 4 3/8" D (179 x 179 x 111mm)

## MSA-5

SURFACE-  
MOUNTED  
MAXIMUM  
SECURITY SOAP  
DISH - FRONT  
MOUNTED



Type 304 11-gauge (3mm) stainless steel, with three 3/8" (10mm) diameter drainage holes.

OVERALL SIZE: 5" W, 2 5/16" H, 2 3/4" D (127 x 59 x 70mm)

## MSA-18

MAXIMUM  
SECURITY  
CLOTHES  
HOOK



Satin-finish stainless steel. Snaps down for safety when overloaded.

OVERALL SIZE: 1 1/2" W, 3 3/8" H (38 x 86mm)

PROJECTS: 1 3/8" (35mm) from wall

**MSA-25** 4 1/4" W, 4 1/4" H, 7/8" D (108 x 108 x 20mm); projects 1 1/4" (30mm) from back plate

## MSA-25

MAXIMUM  
SECURITY  
CLOTHES  
HOOK



Satin-finish stainless steel. Snaps down for safety when overloaded.  
OVERALL SIZE: 4 1/4" W, 4 1/4" H, 7/8" D (108 x 108 x 20mm)  
PROJECTS: 1 1/4" (30mm) from back plate

## MSA-14

MAXIMUM SECURITY  
GRAB BAR



12-gauge (2mm) satin-finish stainless steel. Closure plate welded to grab bar.

BAR DIA.: 1 1/2" (38mm)

FLANGE STYLES: Exposed

OVERALL SIZES:

**MSA-14-18** 18" (457mm) bar length

**MSA-14-30** 30" (762mm) bar length

**MSA-14-36** 36" (914mm) bar length

**MSA-14-42** 42" (1067mm) bar length

Note: Other lengths are available  
1 1/2" (38mm) dia. exposed flange only.



# Specialty Accessories




**355**  
RECESSED  
FACIAL TISSUE  
DISPENSER



Satin-finish stainless steel, 22-gauge (0.8mm).  
CAPACITY: One box of 300 two-ply facial tissues  
OVERALL SIZE: 11 7/8" W, 6 1/8" H, 3 15/16" D (300 x 155 x 100mm)  
**3552** CAPACITY: One box of 300 two-ply facial tissues  
OVERALL SIZE: 11 7/8" W, 6 1/8" H, 2 1/14" D (300 x 155 x 55mm)

**7679**  
SURFACE-  
MOUNTED  
TOOTHBRUSH AND  
TUMBLER HOLDER



 Surface-mounted toothbrush and tumbler holder shall be type-304 stainless steel with bright polished finish.  
**76797** Satin-finish stainless steel  
OVERALL SIZE: 4 1/4" W, 2" H, 4 1/8" D (110 x 50 x 105mm)  
PROJECTS: 4 1/8" (105mm) from wall

**7636**  
SURFACE-  
MOUNTED  
RETRACTABLE  
CLOTHES LINE



**IS**  
Type-304 stainless steel with bright polished finish. Equipped with locking device to keep cord from sagging when in use.  
COVER SIZE: 3 5/8" W, 1 5/32" D (90 x 30mm)  
BUTTON RETAINER PLATE SIZE: 1 1/4" W, 2 5/8" H (35 x 65mm)

**76787**  
SURFACE-MOUNTED  
TOWEL RING



Type-304 stainless steel with satin-finish. 22-gauge (0.8mm) Flange and support arm. Towel ring 1/4" (6mm) diameter bar, stainless steel bar.  
PROJECTS: 2 3/8" (60mm) from wall

**TB-2**  
HEAVY DUTY  
TOWEL BAR



18" (457mm) Bar fabricated of 18-gauge (1.2mm) type 304 stainless tubing with satin-finish. Heavy satin chrome solid brass posts provided with mounting.  
BAR DIA.: 1" (25mm)  
OVERALL SIZES:  
**TB-3** 24" (610mm) bar length

**751**  
TOWEL BAR,  
SQUARE, ZAMAK



Bright-polished finish. Posts are die cast from highest quality virgin zinc alloy (Zamak) to meet ASTM standard B-86.  
PROJECTS: 3 1/4" (83mm) from wall  
OVERALL SIZES:  
**751 X 18** 18" (457mm) bar length  
**751 X 24** 24" (610mm) bar length

**76747**  
SURFACE-MOUNTED  
TOWEL BAR



Type-304 stainless steel with satin-finish.  
BAR DIA.: 3/4" (19mm)  
OVERALL SIZES:  
**76747 X 18** 18" (457mm) bar length  
**76747 X 24** 24" (610mm) bar length  
**7674 X 18** Bright-polished, 18" (457mm) bar length  
**7674 X 24** Bright-polished 24" (610mm) bar length







## 753

### DOUBLE ROBE HOOK



Die-cast from highest quality virgin zinc alloy (Zamak) to meet ASTM standard B-86.

OVERALL SIZE: 2 1/8" W, 1 1/2" H, 1 7/16" D (53 x 38 x 37mm)

## 7682

### SURFACE-MOUNTED HAT AND COAT HOOK



Stainless steel with bright polished finish. Hook shall be 13 gauge (2mm), welded to the support arm.

76827 Satin-finish stainless steel

## 76777

### SURFACE-MOUNTED TOWEL PIN



Type-304 stainless steel with satin-finish. 20-gauge (0.9mm) stainless steel wall plate.

OVERALL SIZE: 2" W, 2" H, 4 7/16" D (51 x 51 x 113mm)

## G-2116

### HEAVY-DUTY CLOTHES HOOK WITH CONCEALED MOUNTING



Locks to wall plate with three stainless steel set screws for theft-resistant mounting. Hook and flange are one-piece brass casting with satin nickel-plated finish to match stainless steel.

CAPACITY: Withstands 300 lbs. (136 kg) downward pull when properly installed.

OVERALL SIZE: 2 3/4" W, 2 3/4" H, 3 7/16" D (70 x 70 x 85mm)

PROJECTS: 3 7/16" (85mm)

## CD-1

### SURFACE-MOUNTED PAPER CUP DISPENSER



Type-304, 22-gauge (0.8mm) satin-finish stainless steel. Equipped with an adjustable bracket to hold cups, a refill-indicator slot, and a tumbler lock. Unit is adjustable to dispense 3- to 6-oz (0.1- to 0.2-L) paper or plastic flat-bottom cups.

OVERALL SIZE: 3 1/4" W, 14 1/2" H, 3 1/4" D (85 x 370 x 85mm)

## G-211

### RECESSED SOAP DISH



Stainless steel recessed shells are stamped from 22-gauge (0.8mm) corrosion-resistant type 304 stainless steel. Permanent soap holder is of type 304 polished stainless steel.

OVERALL SIZE: 6 1/4" W, 6 1/4" H, 1 7/8" D (85 x 370 x 85mm)



# Gamco

---

Gamco Office  
Los Angeles  
New York  
International

Distributed by  
[www.Ameraproducts.com](http://www.Ameraproducts.com)  
Phone: (800) 608-6548  
Fax: (409) 840-9542  
[info@ameraproducts.com](mailto:info@ameraproducts.com)

