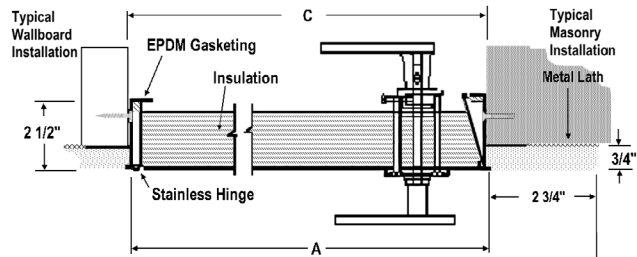


ACCESS PANEL - EXTERIOR FOR PLASTER & STUCCO - XPEA™ AND XPES™

Select this gasketed and insulated access panel with a door that opens to 170° for exterior applications and R-5.7 insulation.



Details of H4 Removable Locking Handle:



SPECIFICATIONS:

Model XPEA - Gavanneal Steel and Aluminum

Frame: 16 ga. Galvanneal steel with plaster flange recessed 3/4"; 2-3/4" wide galvanized expanded metal lath.

Door: 2" Thick with fiberglass insulation, .040 aluminum door with continuous stainless steel hinge and R-value 5.7.

Gaskets: Adhesive-backed EPDM foam and silicone rubber seals on frame and door.

Finish: White powder coat paint.

Handle: (H2) Non-locking, plastic with chrome finish.

Model XPES Stainless Steel

Frame: 16 ga. stainless steel with plaster flange recessed 3/4"; 2-3/4" wide galvanized expanded metal lath.

Door: 2" Thick with fiberglass insulation, 20 ga. with continuous stainless steel hinge and R-value 5.7.

Finish: 304 Stainless - No. 4 finish

Gaskets: Adhesive-backed EPDM foam and silicone rubber seals on frame and door.

Finish: White powder coat paint.

Handle: (H2) Non-locking, plastic with chrome finish.

Sizes:

ORDER SIZE IS DOOR SIZE. Minimum 8" x 8". Maximum size 48" x 48". CLEAR OPENING: Door size minus 1-1/4"

OPTIONAL FEATURES:

- ___ (H3) Locking, plastic handle with chrome finish
- ___ (H4) Removable locking handle (see details at left)
- ___ Optional color code

QTY	Size (A) Frame ID Width x Height	Wall Opening (C) Width x Height	Handles	Approx Ship Weight in lbs.	QTY	Size (A) Width x Height	Wall Opening (C) Width x Height	Handles	Approx Ship Weight in lbs.
	12" x 12"	12-3/8" x 12-3/8"	1	11		24" x 30"	24-3/8" x 30-3/8"	2	40
	14" x 14"	14-3/8" x 14-3/8"	1	15		24" x 36"	24-3/8" x 36-3/8"	2	42
	18" x 18"	18-3/8" x 18-3/8"	1	19		24" x 48"	24-3/8" x 48-3/8"	2	57
	20" x 24"	20-3/8" x 24-3/8"	1	30		30" x 30"	30-3/8" x 30-3/8"	2	44
	20" x 30"	20-3/8" x 30-3/8"	2	32		30" x 36"	30-3/8" x 36-3/8"	2	56
	22" x 30"	22-3/8" x 30-3/8"	2	34		36" x 36"	36-3/8" x 36-3/8"	2	61
	22" x 36"	22-3/8" x 36-3/8"	2	40		36" x 48"	36-3/8" x 48-3/8"	2	75
	24" x 24"	24-3/8" x 24-3/8"	1	27		48" x 48"	48-3/8" x 48-3/8"	2	108
	Custom Size								

It is the responsibility of the customer to communicate specifications and product performance requirements that are needed for their application. This document is intended to convey potential product configurations and offerings. It is not to be used to imply or represent a specification or rating, of finished products shipped. Detailed, specific submittals can be created upon request. It is the responsibility of the customer to specify product accordingly to comply with local laws, codes, and ordinances.



Distributed by
www.AmeraProducts.com
Phone: (800) 608-6568
Fax: (409) 840-5545
info@ameraproducts.com

Distributor:		Project:	
Contractor:		Approved By:	
Date:		Architect:	
Scale: N/A	Page 1 of 1	Item#:	