



# ROOF ACCESSORIES BY DUR-RED PRODUCTS

**DIVISION 07 72 33**

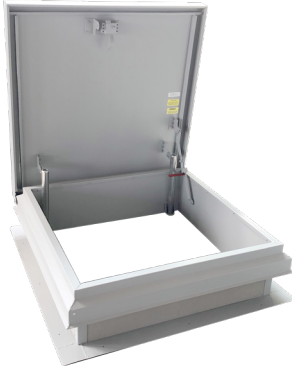
**DIVISION 07 72 36**  
**DIVISION 08 62 00**

ROOF HATCHES  
SAFETY RAILINGS  
SAFETY POSTS  
EQUIPMENT HATCHES  
SMOKE VENTS  
SKYLIGHTS

Distributed by  
[www.Ameraproducts.com](http://www.Ameraproducts.com)  
Phone: (800) 608-6568  
Fax: (409) 840-3345  
[info@ameraproducts.com](mailto:info@ameraproducts.com)



ACTIVAR CONSTRUCTION PRODUCTS GROUP INC.



## DURA-HATCH SERIES™ ROOF HATCHES

*Provides safe and easy access to rooftops from inside commercial buildings*

**Model:** RHU

**Material:** Steel is 14 gauge galvanized with 22 gauge cover liner. Aluminum is 11 gauge with 22 gauge cover liner.

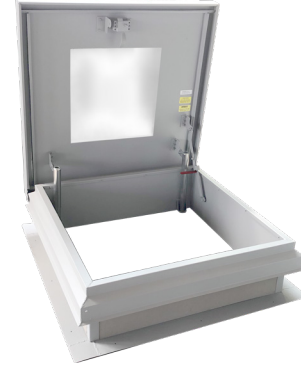
**Finish:** Gray prime coat on steel, silver prime coat on aluminum.

**Insulation:** 1/2" rigid fiberboard in curb and 1" fiberglass in cover.

**Hardware:** Galvanized steel, springs, hold-open arm and latches.

**Sizes:** Minimum size 24" x 24", Maximum size 48" x 120"

**Options:** All-but-curb™, curb-mount, double-wall curb, standing seam curb, curb heights, stainless steel hardware, 1-2" polyiso insulation, powder coat.



## DURA-HATCH VIEW SERIES™ DOMED ROOF HATCHES

*Cover includes domes that provide natural daylighting for safer roof access*

**Model:** RHUV

**Material:** Steel is 14 gauge galvanized with 22 gauge cover liner. Aluminum is 11 gauge with 22 gauge cover liner.

**Finish:** Gray prime coat on steel, silver prime coat on aluminum.

**Domes:** Clear over white acrylic.

**Insulation:** 1/2" rigid fiberboard in curb and 1" fiberglass in cover.

**Hardware:** Galvanized steel, springs, hold-open arm and latches.

**Sizes:** Minimum 30" x 30. Maximum 36" x 60" or 48" x 48".

**Options:** All-but-curb™, curb-mount, double wall curb, standing seam curb, curb heights, stainless steel hardware, 1-2" polyiso insulation, powder coat.

**Dome Options:** Acrylic or polycarbonate, clear or white, single dome.



## EQUIPMENT DURA-HATCH SERIES™ ROOF HATCHES

*Ideal for installing and servicing large equipment through the roof*

**Model:** REH

**Material:** Steel is 14 gauge galvanized with 22 gauge cover liner. Aluminum is 11 gauge with 22 gauge cover liner.

**Finish:** Gray prime coat on steel, silver prime coat on aluminum.

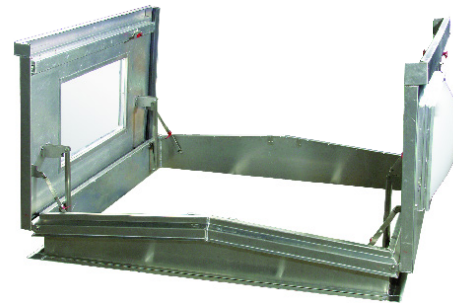
**Insulation:** 1/2" rigid fiberboard in curb and 1" fiberglass in cover.

**Hardware:** Galvanized steel, springs, hold-open arm and latches.

**Sizes:** Minimum 48" x 48". Maximum 72" x 96".

**Clear Opening:** Minus 8" on width and minus 8" on length.

**Options:** Curb-mount, double-wall curb, curb heights, stainless steel hardware, 1-2" polyiso insulation.



## EQUIPMENT DURA-HATCH VIEW SERIES™ DOMED ROOF HATCHES

*Add daylight to areas where equipment access from rooftops is needed*

**Model:** REHV

**Material:** Steel is 14 gauge galvanized with 22 gauge cover liner. Aluminum is 11 gauge with 22 gauge cover liner.

**Finish:** Gray prime coat on steel, silver prime coat on aluminum.

**Domes:** Clear over white acrylic.

**Insulation:** 1/2" rigid fiberboard in curb and 1" fiberglass in cover.

**Hardware:** Galvanized steel, springs, hold-open arm and latches.

**Sizes:** Minimum 72" x 72". Maximum 72" x 96".

**Clear Opening:** Minus 8" on width and minus 8" on length.

**Options:** Curb-mount, double-wall curb, curb heights, stainless steel hardware, 1-2" polyiso insulation.

**Dome Options:** Acrylic or polycarbonate, clear or white, single dome.



## FAHRENHEIT SERIES™ DOUBLE DOOR SMOKE VENTS

*Automatically opens during a fire, releasing harmful smoke and fumes*

**Model:** RVF

**Material:** Curb is 14 gauge galvanized steel and cover is 11 gauge extruded aluminum with 24 gauge galvanized steel liner.

**Finish:** Silver prime coat.

**Insulation:** 1" rigid fiberboard in curb and 1" fiberglass in covers.

**Certifications:** UL793 listed and labeled up to 48" x 96".

**Operation:** Torsion springs automatically open covers when 165°F fusible link melts or with exterior pull handle.

**Sizes:** Minimum 48" x 48. Maximum 60" x 96".

**Options:** Curb-mount, double-wall curb, standing seam curb, curb heights, other fusible link temperatures, electrical McCabe links, manual pulls external and/or internal.



## FAHRENHEIT VIEW SERIES™ DOMED DOUBLE DOOR SMOKE VENTS

*Domed covers provide natural daylighting where smoke vents are installed*

**Model:** RVFV

**Material:** Curb is 14 gauge galvanized steel and cover is 11 gauge extruded aluminum.

**Finish:** Silver prime coat.

**Domes:** Clear over white acrylic.

**Insulation:** 1/2" fiberboard in curb.

**Operation:** Torsion springs automatically open covers when 165°F fusible link melts or with exterior pull handle.

**Sizes:** Minimum 48" x 48. Maximum 72" x 96".

**Options:** Curb-mount, double-wall curb, standing seam curb, curb heights, other fusible link temperatures, electrical McCabe links, manual pulls external and/or internal.

**Dome Options:** Acrylic or polycarbonate, clear or white, single dome.



## DURA SERIES™ SINGLE DOOR SMOKE VENTS DURA-VIEW SERIES™ DOMED SMOKE VENTS

*Automatically opens during a fire, releasing harmful smoke and fumes*

**Model:** RVU

**Domed Model:** RVUV includes clear over white acrylic domes.

**Material:** Curb is 14 gauge galvanized steel and cover is 11 gauge extruded aluminum with 24 gauge galvanized steel liner in RVU cover.

**Finish:** Silver prime coat.

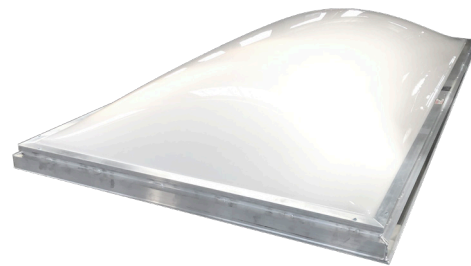
**Insulation:** 1/2" rigid fiberboard in curb and 1" fiberglass in RVU cover.

**Operation:** Torsion springs automatically open cover via 165°F fusible link.

**Sizes:** Minimum 48" x 48. Maximum 48" x 96".

**Options:** Curb-mount, double-wall curb, standing seam curb, curb heights, other fusible link temperatures, electrical McCabe links, manual pulls external and/or internal.

**Dome Options:** Acrylic or polycarbonate, clear or white, single dome.



## SPOTLIGHT SERIES™ SKYLIGHT

*Provides natural daylighting in commercial buildings*

**Model:** RLV

**Material:** Curb-mounted extruded aluminum frame with sloping condensation gutter for drainage.

**Domes:** Clear over white acrylic.

**Sizes:** Minimum 14" x 14". Maximum 48" x 96".

**Dome Options:** Acrylic or polycarbonate, clear or white, single dome.

**Options:** 6" Self-flashing curb with 18 gauge galvanized steel or 11 gauge aluminum. Self-flashing curb heights up to 18".



## SECURITY GRILLES FOR SMOKE VENTS

Add security and fall protection to rooftop smoke vents.

**Model:** RSG

**Material:** 1/2" Diameter steel rod with 6" x 12" spacing.

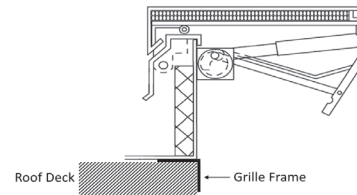
**Flange:** 1-1/4" x 1-1/4" 14 gauge galvanized steel angle drop-in flange for mounting prior to and underneath the smoke vent flange.

**Sizes:** Minimum 48" x 48", Maximum 60" x 96"

**Options:** Bolt-in flange that mounts underneath/inside smoke vent, various bar spacings.



Drop In - Flange mounts below the smoke vent flange.



Roof Deck — Grille Frame



## SAFETY RAILING SYSTEMS FOR ROOF HATCHES

Fall Protection for rooftop openings that mounts to curb flashing

**Model:** RSRWB

**Material:** 1-1/4" galvanized steel schedule 40 pipe

**Fittings:** Galvanized steel cast fittings.

**Certifications:** Complies with OSHA 1910.29 when installed with self-closing gate.

**Safety Gate:** Self-closing, spring-operated steel gate.

**Sizes:** Minimum 36" x 30. Maximum 48" x 120" single door.

**Installation:** Cast steel brackets are bolted to the curb cap flashing.



## SAFETY LADDER POST FOR ROOF HATCHES

A ladder post that bolts onto ladder rungs to provide safe ingress and egress from a ladder to a rooftop.

**Model:** LP-4-DR

**Material:** 1-1/2" square steel tubing and 1/4" steel plate.

**Finish:** Yellow powder coat.

**Spring:** Stainless steel constant force aids in raising and lowering post.

