

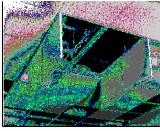


# CEILING ACCESS HATCHES

## Model KSTE/CAD (Exposed Grid)

For Use in Square or Beveled Edge Ceiling Tile

DATE



**KARP ASSOCIATES, INC.**  
54-54 43rd Street, Maspeth, NY 11378

### SPECIFICATIONS

#### GENERAL SCOPE:

Access doors shall be Karp Type KSTE/CAD as manufactured by Karp Associates, Inc., Maspeth, N.Y. Sizes shall be as indicated on the drawings.

#### CONSTRUCTION:

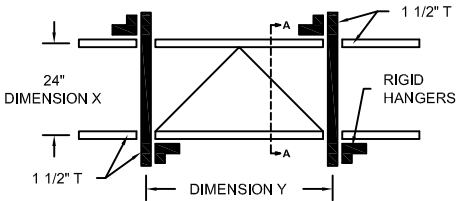
1. Frame shall be 20 gage hot dipped galvanized steel.
2. Door shall be 20 gage electro-galvanized steel with 7/32" flange stove enameled white.
3. Escutcheon caps shall be plastic molded with hinged flaps.
4. Locks shall be budget locks operated with square shanked key.

#### STANDARD SIZES (Special Sizes On Request)

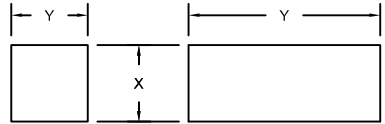
DOOR SIZE (IN.) X Y	SHIP WT. (LBS.)
24 x 24	19.0
24 x 48	35.0

PROJECT DATA					
Project Name:					
Architect:					
Contractor:					
Agent/Customer Name:					
Tagging Instructions:					
Special Instructions:					

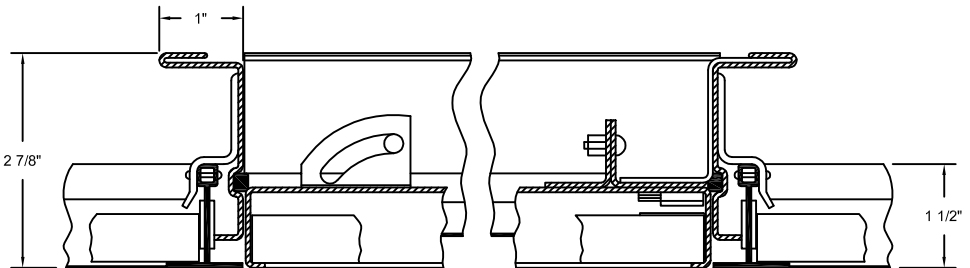
PROJECT SCHEDULE					
Qty.	H	W	No. of Latches	Finish	Remarks



PANEL SUPPORT ILLUSTRATION



OPENING SYSTEMS



SECTION A-A  
SCALE 1:2

Distributed by  
[www.Ameraproducts.com](http://www.Ameraproducts.com)  
Phone: (800) 608-6568  
Fax: (409) 840-5545  
[info@ameraproducts.com](mailto:info@ameraproducts.com)



Made with Union Labor