

mediclinics

HAND DRYERS / SÈCHE-MAINS / SECADOR DE MANOS

E88-UL / E88C-UL / E88CS-UL / E88A-UL / E88AC-UL
E88ACS-UL / E88O-UL E88AO-UL / E85-UL / E85A-UL



INSTALLATION AND OPERATING MANUAL
MANUEL D'INSTALLATION ET D'UTILISATION
MANUAL DE INSTALACIÓN Y UTILIZACIÓN

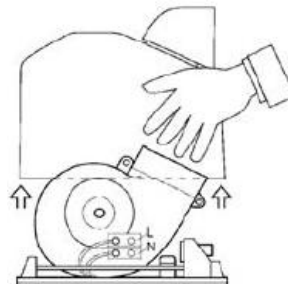
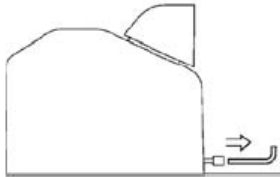
Distributed by
www.AmeraProducts.com
Phone: (800) 608-6548
Fax: (407) 840-3542
info@ameraproducts.com



INSTALLATION

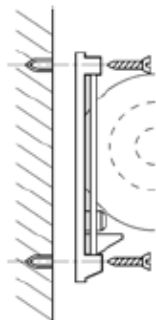
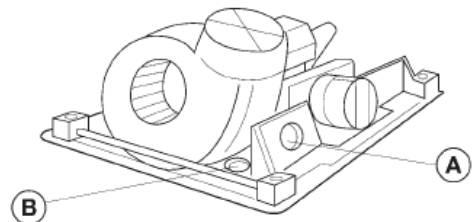
Dismantling for installation

- Unscrew the two lockscrews with the special SANIFLOW wrench.
- Remove the cover, taking care not to knock the equipment.
- Handle the cover with care.



Mounting

- Optional methods:
 - A) Mounting with hose and plug
 - B) Concealed wiring mounting (recommended)



- If opting for the B type connection, put the wiring through before tightening up the base on the wall.
- Use the template provided for wall fixing.
- Drill 4 holes with diameter of 5/16" (8 mm), taking care to clean the dust.
- Screw the base firmly to the wall using a 1/4" (6÷7 mm) flat-ended screwdriver.

Automatic machine.

The automatic model has proximity sensors mounted on the cover, close to the Air outlet. Therefore the sensor has to be connected during the installation.

Once the base fixed to the wall, after the follow-up of all the steps shown in the Sections "dismantling for installation" and "mounting" the procedure is as follows:

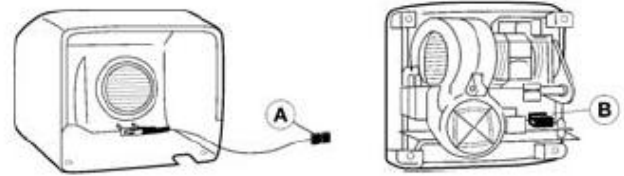
1. Inside the cover you can find the sensors wire fixed by a subsection. Detach it from its provisional subsection by taking care of not to pull the wire (A).
2. Hold the cover without tightening the wire. Plug it into electronic plate from the base, into the connector card which you can find in the middle and right side of same. There is only a position that fits smooth. Do not force the connection (B).
3. When mounting the cover, take care that the sensors wire remains under the black evolute of air ejection. For the assembly, insert the cover into the base and screw the two lockscrews underneath.



INSTALLATION

Take always care of:

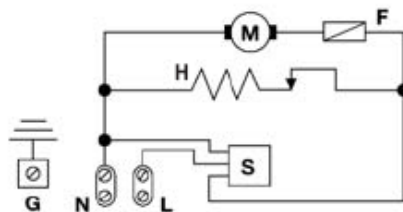
- Never tighten the wire.
- Not to force the connector's connexion.
- By handling it later recall not to pull the sensor's wire between the base and the cover.



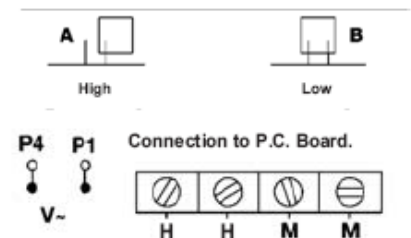
WIRING DIAGRAM

Automatic models

- H- Heating element
- M- Motor
- F- Fuse
- S- Sensor
- G- Ground

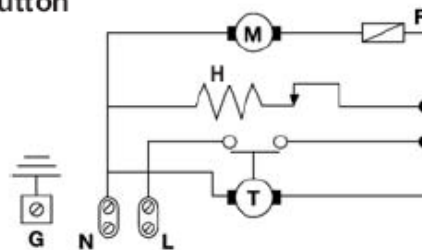


SENSOR RANGE

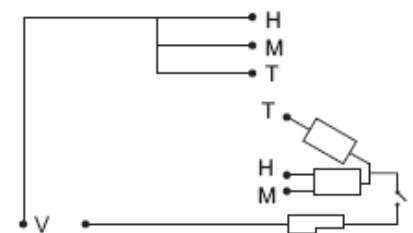


Models with pushbutton

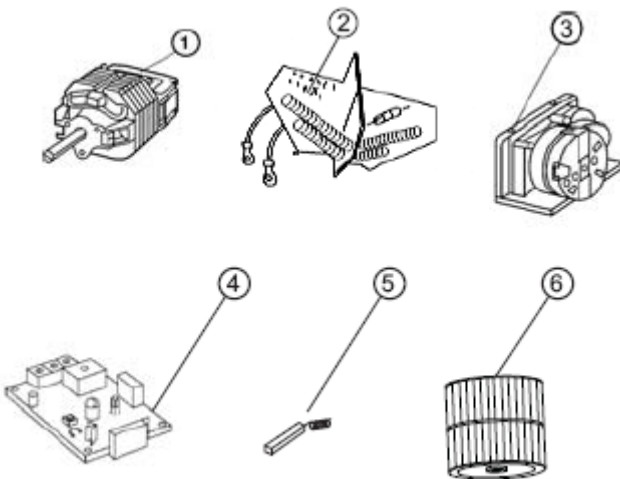
- H- Heating element
- M- Motor
- F- Fuse
- T- Timer
- G- Ground



CONNECTION TO TIMER



BREAKDOWN LIST OF BASIC PARTS



Description	Reference number	Mediclinics' part number
Motor	1	RC95748-UL
Heating element	2	RC95760-UL
Timer	3	RC95730
Sensor	4	RC-95600-UL
Coal brushes set	5	RC95750
Fan Wheel	6	RC95777



METHOD OF USE

To dry correctly is recommended rising well to remove all traces of soap.

Button models:

Press the start button. Immediately after approach the hands to the air outlet and rub them together. The hands can be gradually taken away from the dryer and will continue drying up to a maximum distance of 10-15 cm (4" - 6") .

The handryer works during 34 seconds. After that it stops and will be ready to work again.



Automatic models:

These models operate by hand detection. If hands are held 10÷15 cm (4" - 6") from the air outlet, the dryer will start working. Immediately after the hands can be gradually taken away from the dryer and will continue drying up to a maximum distance of 10÷15 cm (4" - 6"). The machine will stop 2-3 seconds after use.

If the sensor is blocked due to vandalism, the dryer will completely stop working.

Please let a minimum separation of 40 cm (16") between appliance and any shelf, marble, worktop or washbasin.



PREVENTATIVE MAINTENANCE AND CLEANING

Correct cleaning of the unit will lengthen its working life considerably. When in use, the machine will accumulate dust inside which should be cleaned out if used regularly, at least once a year.

CLEANING METHOD

- 1- Disconnect the dryer current supply.
- 2- Unscrew the lockscrews using the special wrench.
- 3- Remove cover.
- 4- With a soft bristle brush, remove the accumulated dust in the scroll fan, rotating the same by hand.
- 5- With the same brush, clean accumulated dust in from the rest of the components.
- 6- Clean the air inlet grill with a medium brush. Control of the motor brushes condition. These should be replaced when its length is less than 3/16" (5 mm).
- 7- Once the maintenance process is completed, re-mount the cover, screw down the lockscrews and connect up.



8- Start up the machine and leave until no further dust remaining from the cleaning process, comes out from the nozzle.

CLEANING OF CHROMED AND GOLD PLATED COVERS

For cleaning purposes only a wet cloth is to be used. Do not use any kind of detergent, acids, lye, abrasives, hydrochloric acid, etc.

Caution: Do not damage or force any components.



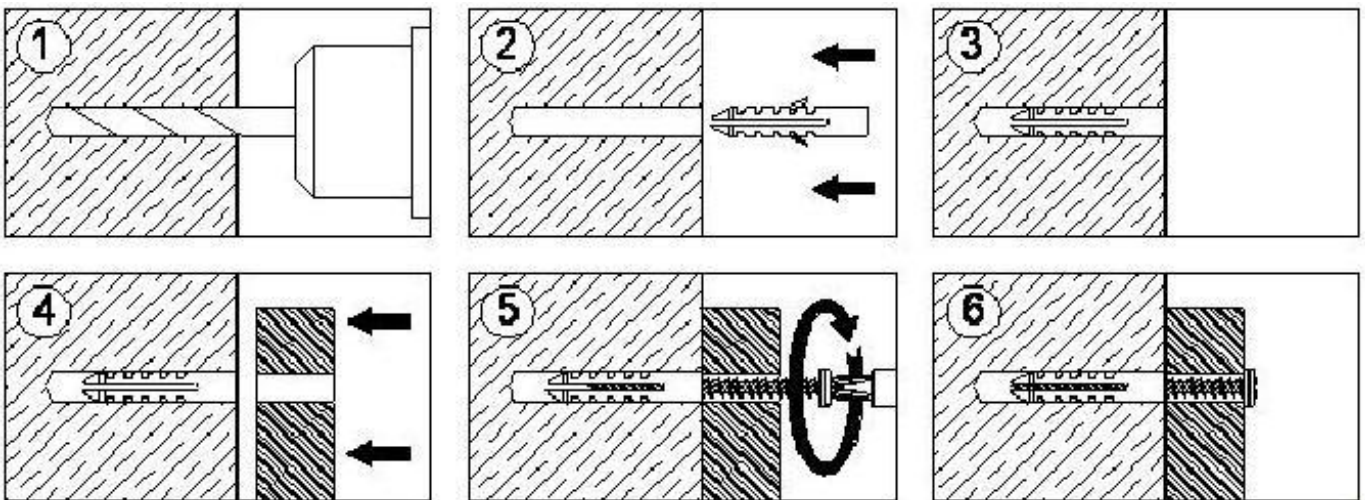
MODEL	MODÈLE	MODELO	E85-UL	E85A-UL	E88-UL	E88C-UL	E88CS-UL	E88A-UL	E888AC-UL	E88ACS-UL
GENERAL:	GÉNÉRAL :	GENERAL:								
Input voltage:	Alimentation :	Alimentación:	110 – 120 VAC 50/60 Hz							
Consumption:	Consommation :	Consumo:	16 A							
Rated power:	Puissance nominale :	Potencia nominal:	2.5 Hp (1,850 W)							
Weight:	Poids :	Peso:	25.4 lb (11,5Kg)				14.3 lb (6,5Kg)			
MOTOR:	MOTEUR :	MOTOR:								
Power:	Puissance :	Potencia:	1/3 Hp (250 W)							
Type:	Type :	Tipo:	Universal brush motor / Universel à balais / Universal de escobillas							
HEATING ELEMENT:	RÉSISTANCE :	RESISTENCIA:								
Power:	Puissance:	Potencia:	2.15 Hp (1.600 W)							
TIMER:	CAPTEUR :	SENSOR:								
Type:	Type:	Tipo:	Electromec./ Electro-méc.	Elec. Sensor	Electromec./ Electro-méc.				Elec. Sensor	
Drying cycle:		Ciclo de secado:	35 s	----	35 s			----		
DIMENSIONS:	DIMENSIONS :	DIMENSIONES:								
Height:	Hauteur :	Alto:	10" (255 mm)				9.8" (248 mm)			
Width:	Largeur :	Ancho:	11" (282 mm)				10.8" (278 mm)			
Depth:	Profondeur :	Profundo:	8.5" (215 mm)				8.3" (210 mm)			
CASING:	CAPOT :	CARCASA:								
Material:	Matière :	Material:	Cast Iron/ Fer forgé / Hierro fundido	Steel / Acier / Acero	Stainless Steel / Acier inox / Acero inoxidable		Steel / Acier / Acero	Stainless Steel / Acier inox / Acero inoxidable		
Thickness:	Épaisseur :	Espesor:	5/64" (2 mm)			0.12" (3 mm.)				
Finish:	Finition :	Acabado:	Glazed porcelain / Porcelaine Vitriifiée / Porcelana vitrificada	White paint / Peinture blanche / Pintado blanco	Bright / Brillant / Brillante	Satin / Satiné / Satinado	White paint / Peinture blanche / Pintado blanco	Bright / Brillant / Brillante	Satin / Satiné / Satinado	
APPROVALS:	HOMOLOGATIONS :	HOMOLOGACIONES:	UL / CSA							
AIR OUTPUT:	SORTIE D'AIR :	SALIDA AIRE:								
Air flow:	Débit d'air :	Caudal de aire:	203 CFM (5.500 l/min)							
Air speed:	Vitesse de l'air :	Velocidad del aire:	5.512 LFM (100 Km/h)							
Air temperature:	Température de l'air :	Temperatura del aire:	128 °F (53 °C)							



ANNEX

MOUNTING INSTRUCTIONS.

- To mount onto wall, be sure there are no hidden electrical circuits or pipes in the mounting location.
- Place the mounting template (provided) on the wall to mark location of four mounting screw holes.
- Drill four holes (Fig.1) Ø8 (5/16") diameter and 45mm (1 ¾") depth.
- Take off the residual dust from the holes.
- Insert nylon plugs (provided) into four holes (Fig.2-3).
- Place base plate on wall (Fig.4).
- Fix the base plate firmly on the wall (Fig.5-6).



MOUNTING ITEMS PROVIDED.

- 4 screw.
- 4 Plug.
- 1 Mounting template.
- 1 Instruction manual.

